

CERTIFICATE OF ANALYSIS



Order #: 32534
 Order Name: Koi Naturals
 Strawberry 500 mg
 Batch#: 9182NSB500
 Received: 06/25/2019
 Completed: 06/28/2019



Koi CBD LLC
 14631 Best Ave
 Norwalk California, 90650
 (877) 774-4779
 thinh@koicbd.com



Sample



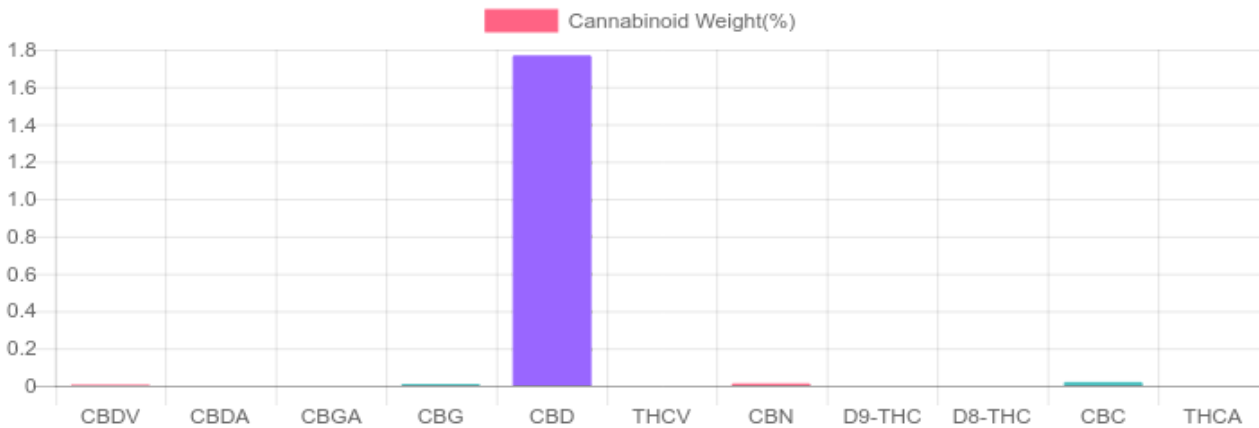
N/D
D9-THC

1.768%
Total CBD

Cannabinoids Test

GSL SOP 400 PREPARED: 06/25/2019 21:20:46 UPLOADED: 06/26/2019 15:57:22

cannabinoids		weight(%)	mg/g
DELTA-9-TETRAHYDROCANNABINOL	D9-THC	N/D	N/D
TETRAHYDROCANNABINOLIC ACID	THCA	N/D	N/D
CANNABIDIOL	CBD	1.768%	17.680
CANNABIDIOLIC ACID	CBDA	N/D	N/D
CANNABIDIVARIN	CBDV	0.005%	0.050
CANNABICHRMENE	CBC	0.020%	0.199
CANNABINOL	CBN	0.012%	0.117
CANNABIGEROL	CBG	0.009%	0.093
CANNABIGEROLIC ACID	CBGA	N/D	N/D
DELTA-8-TETRAHYDROCANNABINOL	D8-THC	N/D	N/D
TETRAHYDROCANNABIVARIN	THCV	N/D	N/D
TOTAL D9-THC		N/D	N/D
TOTAL CBD*		1.768%	17.680
TOTAL CANNABINOIDS		1.814%	18.139



Reporting Limit 10 ppm
 *Total CBD = CBD + CBDA x 0.877
 N/D - Not Detected, B/LOQ - Below Limit of Quantification

Notes

Approximately 551.6mg CBD per 30mL



4001 SW 47th Avenue Suite 207
 Davie, FL 33314
 1-833-TEST-CBD
 info@greenscientificlabs.com



Dylan Swart, Lab Director

Green Scientific Labs uses its best efforts to deliver high quality results and to verify that the data contained therein are based on sound scientific judgment and levels listed are guidelines only and all data was reported based on standard laboratory procedures and deviations. However Green Scientific Labs makes no warranties or claims to that effect and further shall not be liable for any damage or misrepresentation that may result from the use or misuse of the data contained herein in any way. Further, Green Scientific Labs makes no claims regarding representations of the analyzed sample to the larger batch from which it was taken. Data and information in this report are intended solely for the individual(s) for whom samples were submitted and as part of our strict confidentiality policy, Green Scientific Labs can only discuss results with the original client of record.

CERTIFICATE OF ANALYSIS



Order #: 32534
Order Name: Koi Naturals
Strawberry 500 mg
Batch#: 9182NSB500
Received: 06/25/2019
Completed: 06/28/2019



Koi CBD LLC
14631 Best Ave
Norwalk California, 90650
(877) 774-4779
thin@koicbd.com



TERPENES: TOTAL (0.003%)

Headspace GCMS - Shimadzu GCMS QP2020 with HS20

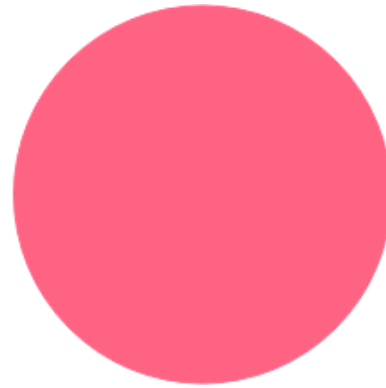
GSL SOP 404

Prepared: 06/25/2019 21:01:27

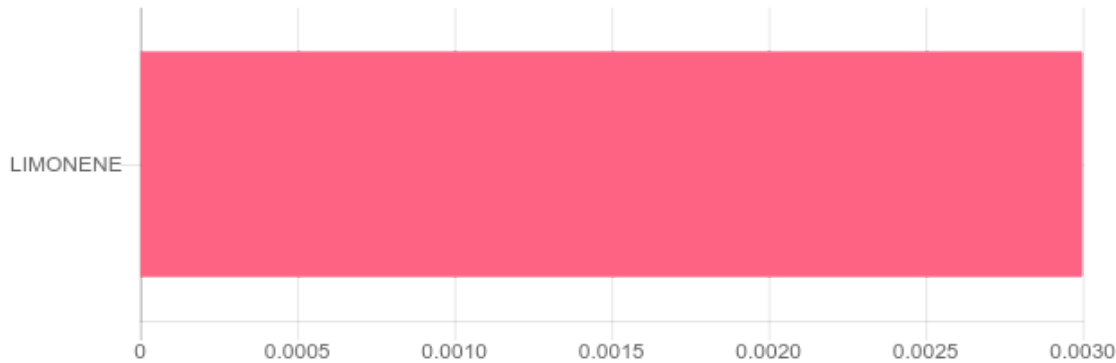
Uploaded: 06/27/2019 15:57:41

Terpene	Results (%)	LOQ (%)	LOD (%)
LIMONENE	B/LOQ	0.0067%	0.0063%

Terpenes Breakdown



Top Terpenes Results:



Tested for but not present:

ALPHA-PINENE, CAMPHENE, SABINENE, BETA-MYRCENE, BETA-PINENE, ALPHA-PHELLANDRENE, 3-CARENE, ALPHA-TERPINENE, TRANS-BETA-OCIMENE, CIS-BETA-OCIMENE, EUCALYPTOL, GAMMA-TERPINENE, TERPINOLENE, SABINENE HYDRATE, LINALOOL, FENCHONE, FENCHOL, ISOPULEGOL, CAMPHOR, ISOBORNEOL, MENTHOL, BORNEOL, TERPINEOL (MIX OF ISOMERS), GAMMA-TERPINEOL, NEROL, GERANIOL, PULEGONE, GERANYL ACETATE, ALPHA-CEDRENE, CARYOPHYLLENE, HUMULENE, VALENCENE, CIS-NEROLIDOL, TRANS-NEROLIDOL, GUAJOL, CARYOPHYLLENE OXIDE, CEDROL, ALPHA-BISABOLOL



4001 SW 47th Avenue Suite 207
Davie, FL 33314
1-833-TEST-CBD
info@greenscientificlabs.com



Dylan Swart, Lab Director

Green Scientific Labs uses its best efforts to deliver high quality results and to verify that the data contained therein are based on sound scientific judgment and levels listed are guidelines only and all data was reported based on standard laboratory procedures and deviations. However Green Scientific Labs makes no warranties or claims to that effect and further shall not be liable for any damage or misrepresentation that may result from the use or misuse of the data contained herein in any way. Further, Green Scientific Labs makes no claims regarding representations of the analyzed sample to the larger batch from which it was taken. Data and information in this report are intended solely for the individual(s) for whom samples were submitted and as part of our strict confidentiality policy, Green Scientific Labs can only discuss results with the original client of record.

CERTIFICATE OF ANALYSIS



Order #: 32534
 Order Name: Koi Naturals
 Strawberry 500 mg
 Batch#: 9182NSB500
 Received: 06/25/2019
 Completed: 06/28/2019



Koi CBD LLC
 14631 Best Ave
 Norwalk California, 90650
 (877) 774-4779
 thinh@koicbd.com



PESTICIDE ANALYSIS:

GSL SOP 401

PREPARED: 06/25/2019 23:02:55

UPLOADED: 06/26/2019 19:09:17

GCMS-MS - Shimadzu GCMS-TQ8040

Pesticide	Action Level (ppm)	Results (ppm)	LOQ (ppm)	LOD (ppm)
CAPTAN	0.700	N/D	0.003	0.001
CHLORDANE	0.100	N/D	0.003	0.001
CHLORFENAPYR	0.100	N/D	0.003	0.001
COUMAPHOS	0.100	N/D	0.003	0.001

Pesticide	Action Level (ppm)	Results (ppm)	LOQ (ppm)	LOD (ppm)
CYLFLUTHRIN	2.000	N/D	0.003	0.001
CYPERMETHRIN	1.000	N/D	0.003	0.001
PARATHION-METHYL	0.100	N/D	0.003	0.001
PENTACHLORONITROBENZENE	0.100	N/D	0.003	0.001

LCMS-MS - Shimadzu LCMS-8060

Pesticide	Action Level (ppm)	Results (ppm)	LOQ (ppm)	LOD (ppm)
ABAMECTIN B1A	0.100	N/D	0.003	0.001
ACEPHATE	0.100	N/D	0.003	0.001
ACEQUINOCYL	0.100	N/D	0.003	0.001
ACETAMIPRID	0.100	N/D	0.003	0.001
ALDICARB	0.100	N/D	0.003	0.001
AZOXYSTROBIN	0.100	N/D	0.003	0.001
BIFENAZATE	0.100	N/D	0.003	0.001
BIFENTHRIN	3.000	N/D	0.003	0.001
BOSCALID	0.100	N/D	0.003	0.001
CARBARYL	0.500	N/D	0.003	0.001
CARBOFURAN	0.100	N/D	0.003	0.001
CHLORANTRANILIPROLE	10.000	N/D	0.003	0.001
CHLORPYRIFOS	0.100	N/D	0.003	0.001
CLOFENTEZINE	0.100	N/D	0.003	0.001
DAMINOZIDE	0.100	N/D	0.003	0.001
DIAZANON	0.100	N/D	0.003	0.001
DICHLORVOS	0.100	N/D	0.003	0.001
DIMETHOATE	0.100	N/D	0.003	0.001
DIMETHOMORPH	2.000	N/D	0.003	0.001
ETHOPROPHOS	0.100	N/D	0.003	0.001
ETOFENPROX	0.100	N/D	0.003	0.001
ETOXAZOLE	0.100	N/D	0.003	0.001
FENHEXAMID	0.100	N/D	0.003	0.001
FENOXYCARB	0.100	N/D	0.003	0.001
FENPYROXIMATE	0.100	N/D	0.003	0.001
FIPRONIL	0.100	N/D	0.003	0.001
FLONICAMID	0.100	N/D	0.003	0.001
FLUDIOXONIL	0.100	N/D	0.003	0.001
HEXYTHIAZOX	0.100	N/D	0.003	0.001


Pesticide	Action Level (ppm)	Results (ppm)	LOQ (ppm)	LOD (ppm)
IMAZALIL	0.100	N/D	0.003	0.001
IMIDACLOPRID	5.000	N/D	0.003	0.001
KRESOXIM-METHYL	0.100	N/D	0.003	0.001
MALATHION	0.500	N/D	0.003	0.001
METALAXYL	2.000	N/D	0.003	0.001
METHIOCARB	0.100	N/D	0.003	0.001
METHOMYL	1.000	N/D	0.003	0.001
MEVINPHOS	0.100	N/D	0.003	0.001
MYCLOBUTANIL	0.100	N/D	0.003	0.001
NALED	0.100	N/D	0.003	0.001
OXAMYL	0.500	N/D	0.003	0.001
PACLOBUTRAZOL	0.100	N/D	0.003	0.001
PERMETHRINS	0.500	N/D	0.003	0.001
PHOSMET	0.100	N/D	0.003	0.001
PIPERONYL BUTOXIDE	3.000	N/D	0.003	0.001
PRALLETHRIN	0.100	N/D	0.003	0.001
PROPICONAZOLE	0.100	N/D	0.003	0.001
PROPOXUR	0.100	N/D	0.003	0.001
PYRETHRINS (PYRETHRIN I)	0.500	N/D	0.003	0.001
PYRIDABEN	0.100	N/D	0.003	0.001
SPINETORAM	0.100	N/D	0.003	0.001
SPINOSAD	0.100	N/D	0.003	0.001
SPIROMESIFEN	0.100	N/D	0.003	0.001
SPIROTETRAMAT	0.100	N/D	0.003	0.001
SPIROXAMINE	0.100	N/D	0.003	0.001
TEBUCONAZOLE	0.100	N/D	0.003	0.001
THIACLOPRID	0.100	N/D	0.003	0.001
THIAMETHOXAM	5.000	N/D	0.003	0.001
TRIFLOXYSTROBIN	0.100	N/D	0.003	0.001

N/D = Not Detected, A/LOQ = Above LOQ Level, B/LOQ = Below LOQ Level, B/LOD = Below LOD Level



4001 SW 47th Avenue Suite 207
 Davie, FL 33314
 1-833-TEST-CBD
 info@greenscientificlabs.com




 Dylan Swart, Lab Director

Green Scientific Labs uses its best efforts to deliver high quality results and to verify that the data contained therein are based on sound scientific judgment and levels listed are guidelines only and all data was reported based on standard laboratory procedures and deviations. However Green Scientific Labs makes no warranties or claims to that effect and further shall not be liable for any damage or misrepresentation that may result from the use or misuse of the data contained herein in any way. Further, Green Scientific Labs makes no claims regarding representations of the analyzed sample to the larger batch from which it was taken. Data and information in this report are intended solely for the individual(s) for whom samples were submitted and as part of our strict confidentiality policy, Green Scientific Labs can only discuss results with the original client of record.

CERTIFICATE OF ANALYSIS



Order #: 32534
Order Name: Koi Naturals
Strawberry 500 mg
Batch#: 9182NSB500
Received: 06/25/2019
Completed: 06/28/2019



Koi CBD LLC
14631 Best Ave
Norwalk California, 90650
(877) 774-4779
thin@koicbd.com



RESIDUAL SOLVENTS:

Headspace GCMS - Shimadzu GCMS QP2020 with HS20

GSL SOP 405

Prepared: 06/25/2019 21:03:10

Uploaded: 06/27/2019 16:18:41

Residual Solvent	Action Level (ppm)	Results (ppm)	LOQ (ppm)	LOD (ppm)
ACETONE	5,000	N/D	140	20
ACETONITRILE	410	N/D	25	1
BENZENE	1	N/D	1	0.5
BUTANE	5,000	N/D	50	10
CHLOROFORM	1	N/D	1	0.5
DICHLOROETHANE	1	N/D	1	0.5
DICHLOROMETHANE	1	N/D	1	0.5
ETHANOL	5,000	N/D	140	20
ETHYL ACETATE	5,000	N/D	140	20
ETHYL ETHER	5,000	N/D	140	20
ISOPROPYL ALCOHOL	5,000	N/D	140	20
METHANOL	3,000	N/D	100	20
N-HEPTANE	5,000	N/D	140	20
N-HEXANE	290	N/D	18	10
PENTANE	5,000	N/D	140	20
PROPANE	5,000	N/D	20	1
TOLUENE	890	N/D	53	1
TRICHLOROETHENE	0	N/D	0	0
XYLENES	2,170	N/D	130	20



4001 SW 47th Avenue Suite 207
Davie, FL 33314
1-833-TEST-CBD
info@greenscientificlabs.com



Dylan Swart, Lab Director

Green Scientific Labs uses its best efforts to deliver high quality results and to verify that the data contained therein are based on sound scientific judgment and levels listed are guidelines only and all data was reported based on standard laboratory procedures and deviations. However Green Scientific Labs makes no warranties or claims to that effect and further shall not be liable for any damage or misrepresentation that may result from the use or misuse of the data contained herein in any way. Further, Green Scientific Labs makes no claims regarding representations of the analyzed sample to the larger batch from which it was taken. Data and information in this report are intended solely for the individual(s) for whom samples were submitted and as part of our strict confidentiality policy, Green Scientific Labs can only discuss results with the original client of record.

CERTIFICATE OF ANALYSIS



Order #: 32534
Order Name: Koi Naturals
Strawberry 500 mg
Batch#: 9182NSB500
Received: 06/25/2019
Completed: 06/28/2019



Koi CBD LLC
14631 Best Ave
Norwalk California, 90650
(877) 774-4779
thin@koicbd.com



Mycotoxin Analysis:

LC-MS - Shimadzu LCMS-8060
GSL SOP 401

Uploaded: 06/26/2019 19:09:17

Analyte	Action Lvl (ppb)	Results (ppb)
AFLATOXIN B1	20	N/D
AFLATOXIN B2	20	N/D
AFLATOXIN G1	20	N/D
AFLATOXIN G2	20	N/D
OCHRATOXIN A	20	N/D

LOQ is 4ppb, LOD is 1ppb

Microbial Analysis:

PCR - Agilent AriaMX

Test	Test Method Used	Device Used	LOD	Allowable Amount	Actual Result	Pass/Fail
STEC E.COLI*	USP 61/62†	ARIAMX PCR	2 COPIES OF DNA	PRESENCE / ABSENT	BELOW LOD	PASS
SALMONELLA*	USP 61/62†	ARIAMX PCR	5 COPIES OF DNA	PRESENCE / ABSENT	BELOW LOD	PASS
ASPERGILLUS	USP 61/62†	ARIAMX PCR	ASP_LOD***	PRESENCE / ABSENT	BELOW LOD	PASS
YEAST AND MOLD	USP 61/62†	ARIAMX PCR	363.05518 CFU/G**	1,000	BELOW THRESHOLD	PASS
TOTAL AEROBIC BACTERIA	USP 61/62†	ARIAMX PCR	0.25316 CFU/G**	10,000	BELOW THRESHOLD	PASS
COLIFORM	USP 61/62†	ARIAMX PCR	3.41539 CFU/G**	100	BELOW THRESHOLD	PASS
ENTEROBACTERIACEAE	USP 61/62†	ARIAMX PCR	0.32951 CFU/G**	100	BELOW THRESHOLD	PASS

† USP 61 (enumeration of bacteria TAC, TYM, and ENT/Coliform), USP 62 (identifying specific species E.coli Aspergillus etc)

* STEC and Salmonella run as Multiplex

** CFU/g Calculation based on Select Category Type Gummy MIP/Extract Flower matrix

*** Flavus = 2 Copies of DNA / Fumigatis = 2 Copies of DNA Niger = 20 Copies of DNA / Terrus = 10 copies of DNA

Water Activity:

HD-3A Water Activity Meter - GSL SOP 407

Uploaded: 06/26/2019 00:00:01

Water

0.61

Filth and Foreign Materials Analysis:

Microscope - Amscope Simul-Focal Trinocular Stereo Zoom Microscope - GSL SOP 409

Uploaded: 06/28/2019 15:28:59

No foreign materials detected



4001 SW 47th Avenue Suite 207
Davie, FL 33314
1-833-TEST-CBD
info@greenscientificlabs.com



Dylan Swart, Lab Director

Green Scientific Labs uses its best efforts to deliver high quality results and to verify that the data contained therein are based on sound scientific judgment and levels listed are guidelines only and all data was reported based on standard laboratory procedures and deviations. However Green Scientific Labs makes no warranties or claims to that effect and further shall not be liable for any damage or misrepresentation that may result from the use or misuse of the data contained herein in any way. Further, Green Scientific Labs makes no claims regarding representations of the analyzed sample to the larger batch from which it was taken. Data and information in this report are intended solely for the individual(s) for whom samples were submitted and as part of our strict confidentiality policy, Green Scientific Labs can only discuss results with the original client of record.